

SAVINGS

Recycling is not only good for the environment, it can be great for your bottom line too! CR&R provides mixed recycling bins for your convenience. By exchanging a trash bin with a recycle bin, your monthly bill may be reduced. Let us show you how to better manage your waste stream and put money back in your business and not in your waste bin.

GETTING STARTED

CR&R will work with your business to determine the types of materials you generate and structure a program using the space you have available in and around your office for collection.

CUSTOMIZED PROGRAMS

CR&R offers waste audits for businesses seeking to improve their current recycling and waste programs. CR&R will evaluate your waste stream from the inside out to achieve the most successful recycling program possible. For additional information, please call our office.



other services

BULKY ITEMS

Items that cannot properly fit in your bin, such as a chair or desk, are considered bulky items and require a special pick up. Electronic waste [e-Waste] is anything with a circuit board or battery, such as computers, telephones and small printers. White goods [e.g. refrigerators, freezers] and electronic waste cannot be disposed of in your bin. CR&R will collect and properly recycle these items. For more information, please call our customer service department.

HAZARDOUS WASTE

Hazardous waste are products that are flammable, corrosive, reactive or toxic. They are dangerous to the public and the environment. It is illegal to dispose of hazardous wastes in your CR&R containers. Hazardous wastes must be disposed of properly. For further information about the disposal of hazardous waste, please visit Riverside County Department of Waste Resources www.rcwaste.org.

BIN & CONTAINER SIZES

RECYCLING BIN DIMENSIONS

- 2 YARD**
4'h x 7' w x 2'd
- 3 YARD**
4'h x 7' w x 4'd
- 4 YARD**
5'h x 7' w x 5'6" d

*SIZE AVAILABILITY BASED ON SERVICE AREA



CONTAINER DIMENSIONS

- 40 YARD**
6'h x 8' w x 22'd



* CONTAINERS MAY VARY IN SIZE



Lower your carbon footprint everyday by recycling.



CUSTOMER SERVICE 877.482.5656

Monday - Friday 8:00 am to 5:00 pm

crrwasteservices.com

HOLIDAY SCHEDULE OF NON-COLLECTION DAYS

New Year's Day	Labor Day
Memorial Day	Thanksgiving Day
Independence Day	Christmas Day

If the holiday falls during the week, collection for the remainder of the week may be postponed by one day.



environmental services

the face of a greener generation

IT'S THE LAW! BUSINESS RECYCLING

THESE ITEMS ARE RECYCLABLE AND MAY BE PLACED IN YOUR WHITE RECYCLE BIN OR RECYCLE CART.

PAPER

- Magazines
- Phone Books
- Newspaper
- Cardboard [Flattened]
- Milk or Juice Cartons

METAL

- Aluminum Cans
- Tin Cans

GLASS

- Bottles and Jars

PLASTICS

- Drink Bottles
- Detergent Containers
- Plastic Toys
- Milk Containers



Assembly Bill 939

[AB 939] required jurisdictions to meet diversion goals of 25% by 1995 and 50% by the year 2000.

Assembly Bill 341

[AB 341] requires all jurisdictions to meet the diversion goal of 75% by 2020 resulting in businesses that generate 4 or more cubic yards of waste to either:

- Participate in a recycling program with their local waste hauler.
- Donate, sell and/or self-haul materials to a recycling facility.

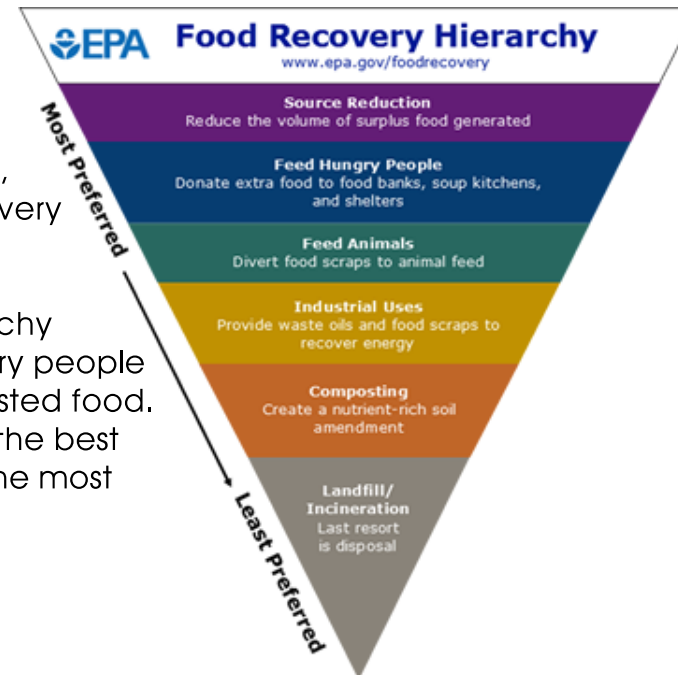
Information about California's business recycling requirements is available from CalRecycle at <https://calrecycle.ca.gov/recycle/commercial>.

Food Recovery

The County of Riverside has launched "Waste Not Riv Co" to support businesses that can donate food to help their community. Feeding hungry people with donations of extra food is an integral part of resource conservation. Organizations served by food rescue and food bank programs include community centers, soup kitchens, food pantries, homeless shelters, senior programs, and childcare centers. The following website <https://www.rivcoeh.org/OurServices/Foods/FoodDonations> will support a business with documents, locations, and resources for a safe food recovery program.

The US EPA's Food Recovery Hierarchy ranks food donations to feed hungry people as a top priority to help reduce wasted food. The top levels of the hierarchy are the best ways to prevent waste and bring the most benefits to the environment.

Blythe's Food Donation Center
Harmony Kitchen
219 S. Main St.
Blythe, CA 92225



RECYCLE PROGRAMS

1 MIXED RECYCLING

This program recycles materials such as: cardboard, mixed paper, plastic, aluminum and glass bottles. They may be mixed together and placed in a recycling bin.

2 SOURCE SEPARATED RECYCLING

Your business may generate a large amount of one type of recyclable material such as cardboard. CR&R can help you determine the best container for your needs based on the quantity and type of material.

